

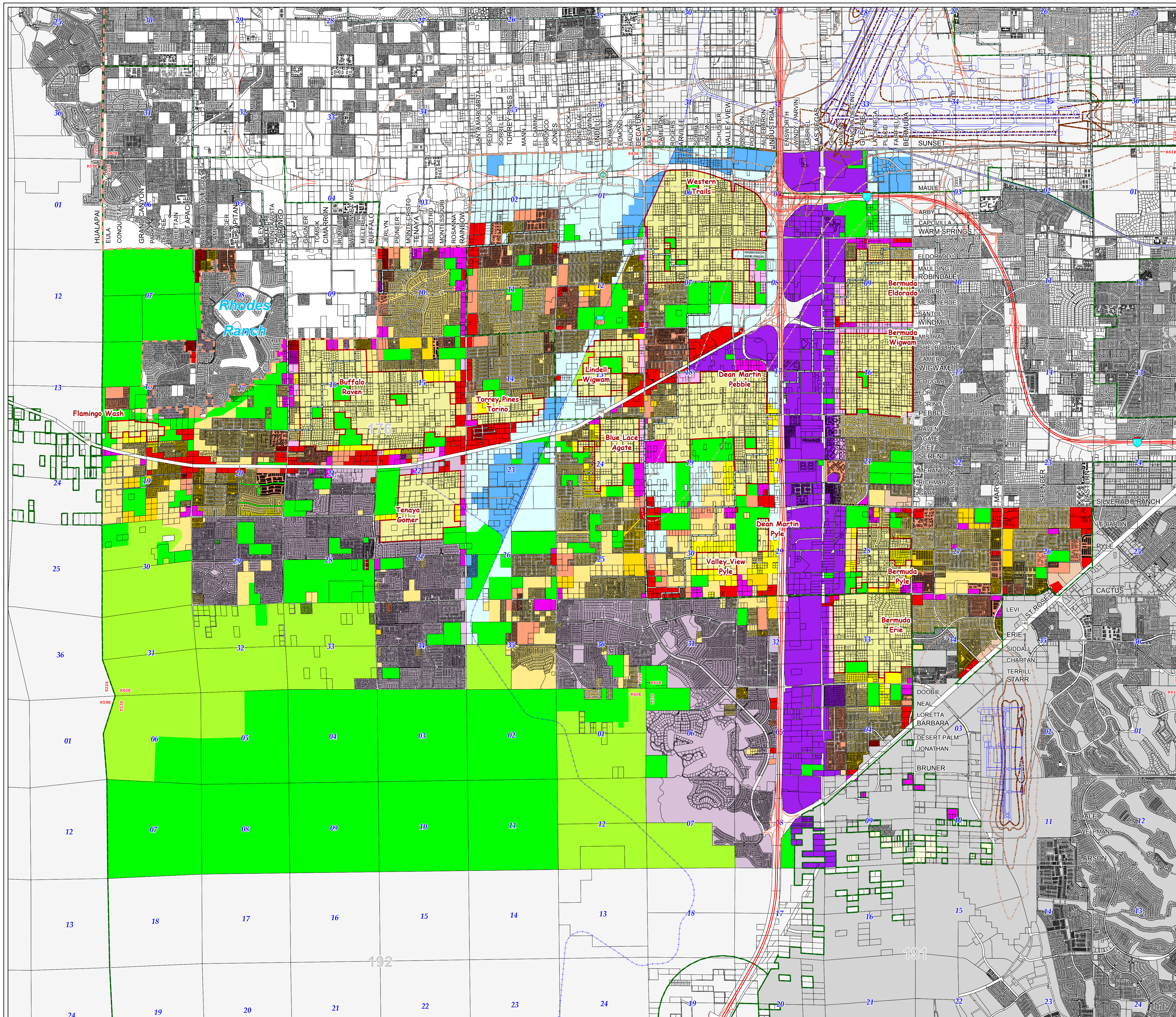
Comprehensive Planning

Enterprise Planning Area

Planned Land Use

Amended March 20, 2019

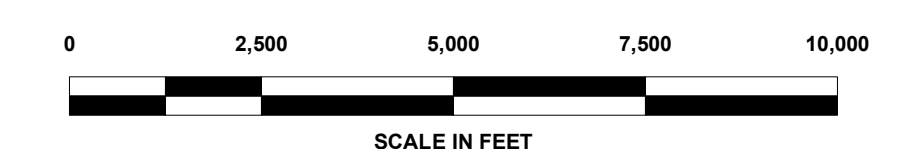
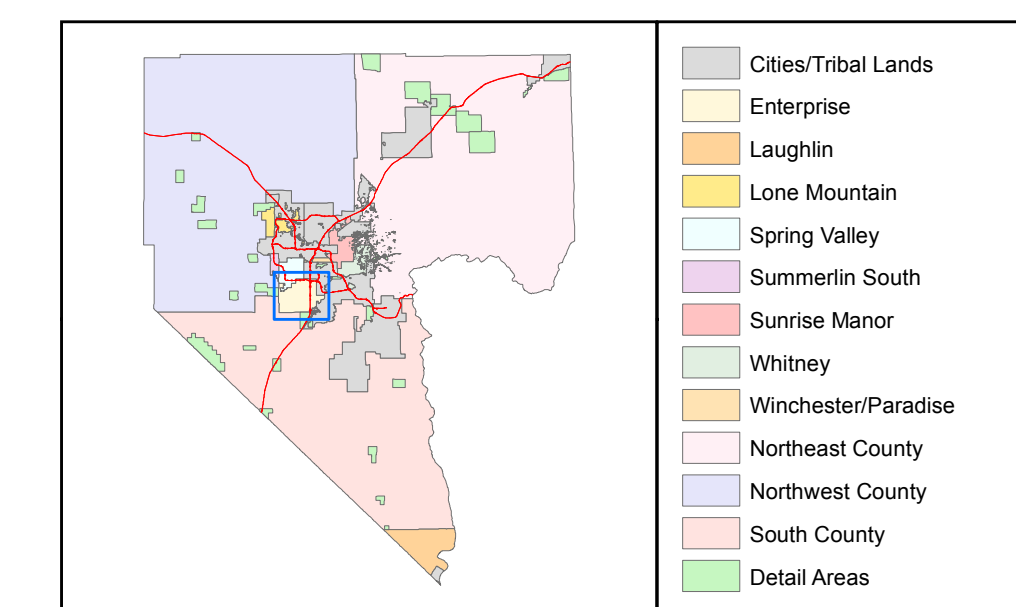
Effective April 3, 2019



- | | |
|--|--------------------------------------|
| Open Lands | Office Professional |
| Residential Rural
Up to 0.5 du/1 ac | Commercial Neighborhood |
| Residential Agricultural
Up to 1 du/1 ac | Commercial General |
| Rural Neighborhood Preservation
Up to 2 du/1 ac | Commercial Tourist |
| Rural Neighborhood
Up to 2.5 du/1 ac | Business and Design
Research Park |
| Residential Low
Up to 3.5 du/1 ac | Industrial |
| Residential Suburban
Up to 8 du/1 ac | Heavy Industrial |
| Residential Medium
Up to 3 du/1 ac to 14 du/1 ac | Public Facilities |
| Residential High
Up to 8 du/1 ac to 18 du/1 ac | Institutional |
| Residential Urban Center
Up to 18 du/1 ac to 32 du/1 ac | Major Development Projects |
| Residential High Rise Center
Greater than 32 du/1 ac | |

- | | |
|-----------------------------|---------------------|
| Planning Area Boundary | Noise Environ A-E60 |
| Community Districts | Noise Environ A-E65 |
| Cooperative Management Area | Noise Environ A-E70 |
| | Noise Environ A-E75 |

- | | |
|-------------------------|-----------------------------|
| CCSD = School District | L = Library |
| E = Elementary | P = Park |
| M = Middle | W = Place of Worship |
| H = High | SS = Electrical Sub-Station |
| G = Government Facility | PW = Public Sub-Station |
| GC = Golf Course | WD = Water District |
| F = Fire Station | U = Utility |



Map created on: April 16, 2019

This information is for display purposes only.
No liability is assumed as to the accuracy of the data delineated hereon.
Categories denoted in the legend may not apply to a particular Planning Area.

